

armatile
innovation in tile design



VICTORIAN FLOORING GUIDE

armatile.com

ARMAGH | NEWRY | BELFAST | DUBLIN

TABLE OF CONTENT

PAGE 1

INTRODUCTION

PAGE 2

DONARD PANELS

PAGE 3

GEOMETRIC PANELS

PAGE 4

DONARD INSET / LUCAS PANELS

PAGE 5

GOSFORD BORDERS & CORNERS

PAGE 6

MODULAR SYSTEM

PAGE 7

TECHNICAL INFORMATION

PAGE 8

PRODUCT IMAGES

PAGE 9

PRODUCT IMAGES



INTRODUCTION



Red
285 x 285mm

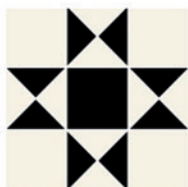
Inspired by Victorian designs our geometric floor tiles are manufactured by Armatile to offer you the timeless elegance that has come to be associated with classical period flooring features.

The range is created in classical colours originally seen in aristocratic homes and churches of the 1800s.



REVERSE
285 x 285mm

The individual pieces in our geometric mosaic designs are manufactured from the highest quality unglazed porcelain stoneware and then pre-assembled on mesh sheets to allow for easy installation and lower fitting costs. This modular system ensures pre-defined grout joints and perfectly symmetrical floors. Other companies supply Victorian tile designs in individual pieces that can be labour intensive, difficult and costly to fit!



Black & White
285 x 285mm

As a result the entire range is suitable for both indoor and outdoor use in a wide range of architectural, hospitality, conservation and residential applications.

Our Victorian style tile mosaics are supplied complete on four different modular mesh mounted panels using innovative manufacturing techniques.

Architectural/Design Use:

Bars, civic buildings, churches, coffee shops, hotels, museums, restaurants etc

Domestic Use:

Bathrooms, kitchens, conservatories, porches, hallways, garden pathways and patios.



DONARD PANELS



Red
DONREV04P
285x285mm



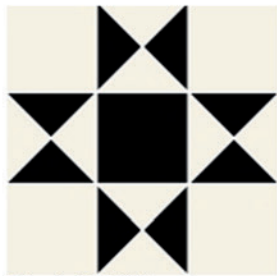
REVERSE
285x285mm



Beige
DONREV01P
285x285mm



Yellow
DONREV02P
285x285mm



Black & White
DONREV03P
285x285mm



Lime
DONREV11P
285x285mm



Sonne
DONREV09P
285x285mm



Monochrome
DONREV12P
285x285mm



GEOMETRIC PANELS



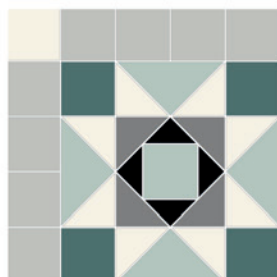
Tollymore Mixed Grey
381x381mm
TOLPAV01P



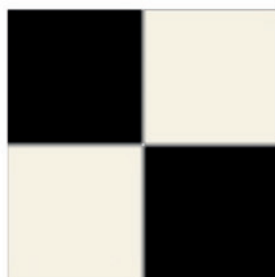
Marina Mint Panel
381x381mm
MARPAV01P



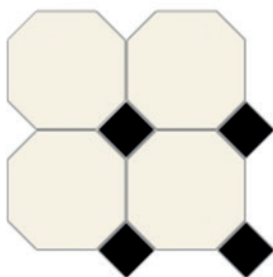
Milford Ocean Shimmer
381x381mm
MILPAV02P



Milford Emerald
Geometric Panel
381x381mm
MILPAV01P



142mm Black & White
Chequered Panel
285x285mm
CHEPAV01P



White Octagon Sheet
With Black Inset
285x285mm
CATOCT04T



DONARD INSETS



Donard Ashby
Inset 93x93
DONREV13I



Donard Albert
Inset 93x93
DONREV11I



Donard Ascot
Inset 93x93
DONREV14I



Donard Auburn
Inset 93x93
DONREV12I



Black & Gema
Albert Inset 93x93
DONREV16I

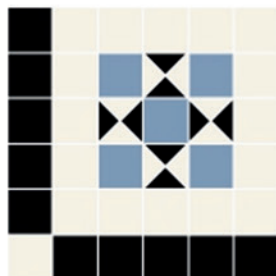


Blue & White
Auburn Inset 93x93
DONREV17I

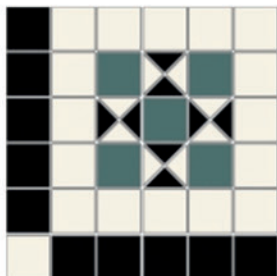


Mix Grey & White
Ascot Inset 93x93
DONREV18I

48MM LUCAS PANELS



Lucas Tolymore
Blue Panel 48mm
297x297mm
LUCPAV01S



Lucas Tolymore
Green Panel 48mm
297x297mm
LUCPAV01S



GOSFORD BORDERS & CORNERS



Gosford Red Corner 93x93
GOSREV01C

Gosford Red Border 285x93
GOSREV01B



Gosford Black & White Corner
93x93 GOSREV02C

Gosford Black & White
Border 285x93 GOSREV02B



Gosford Imperium Blue Corner 93x93
GOSREV09C

Gosford Imperium Blue Border
285x93 GOSREV09B



Gosford Pavilion Grey Corner 93x93
GOSREV08C

Gosford Pavilion Grey Border
285x93 GOSREV08B



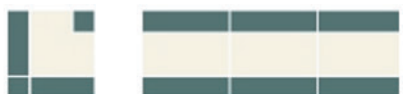
Gosford Shadow Grey Corner 93x93
GOSREV10C

Gosford Shadow Grey Border
285x93 GOSREV10B



Gosford Ocean Shimmer Corner
93x93 GOSPAV03C

Gosford Ocean Shimmer Border
285x93 GOSPAV03B



Triple Strip Menta & White Corner
93x93 TRIPAV01C

Triple Strip Menta & White Border
285x93 TRIPAV01B



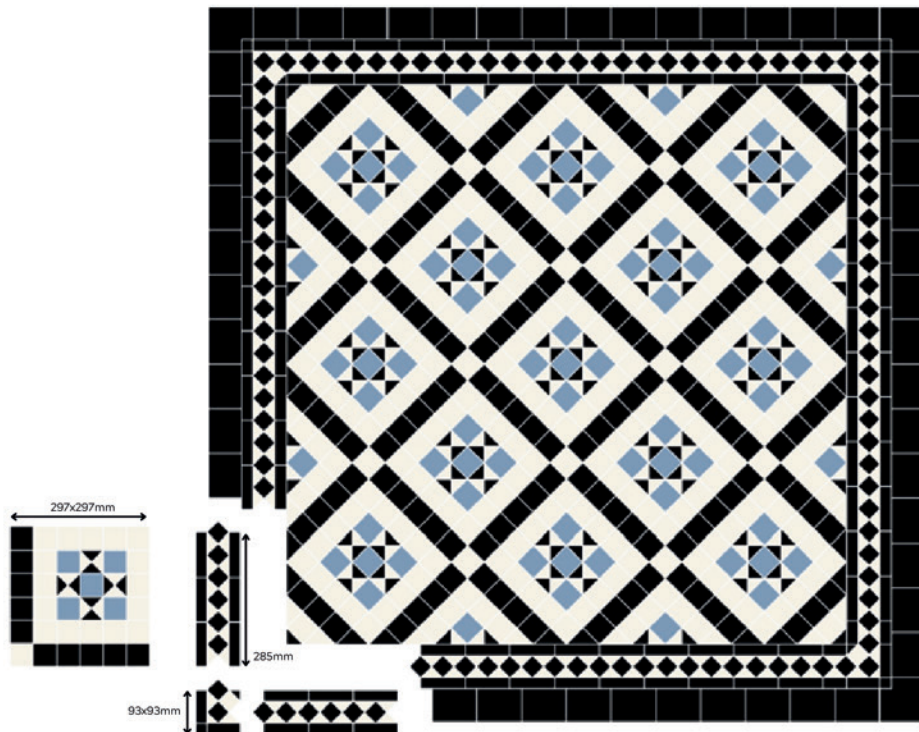
Gosford Turquesa Corner
93x93 GOSPAV04C

Gosford Turquesa Border
285x93 GOSPAV04B



MODULAR SYSTEM

Component Parts



Featured in this modular example -

Lucas Tollymore Blue 48mm Panel
297x297mm - LUCPAV01S

Gosford Black & White Border
285x93mm - GOSREV01B

Gosford Black & White Corner
93x93mm - GOSREV01C

Cathedral Black Infill
93x93mm - ARMPAV02T



TECHNICAL INFORMATION

Benefits

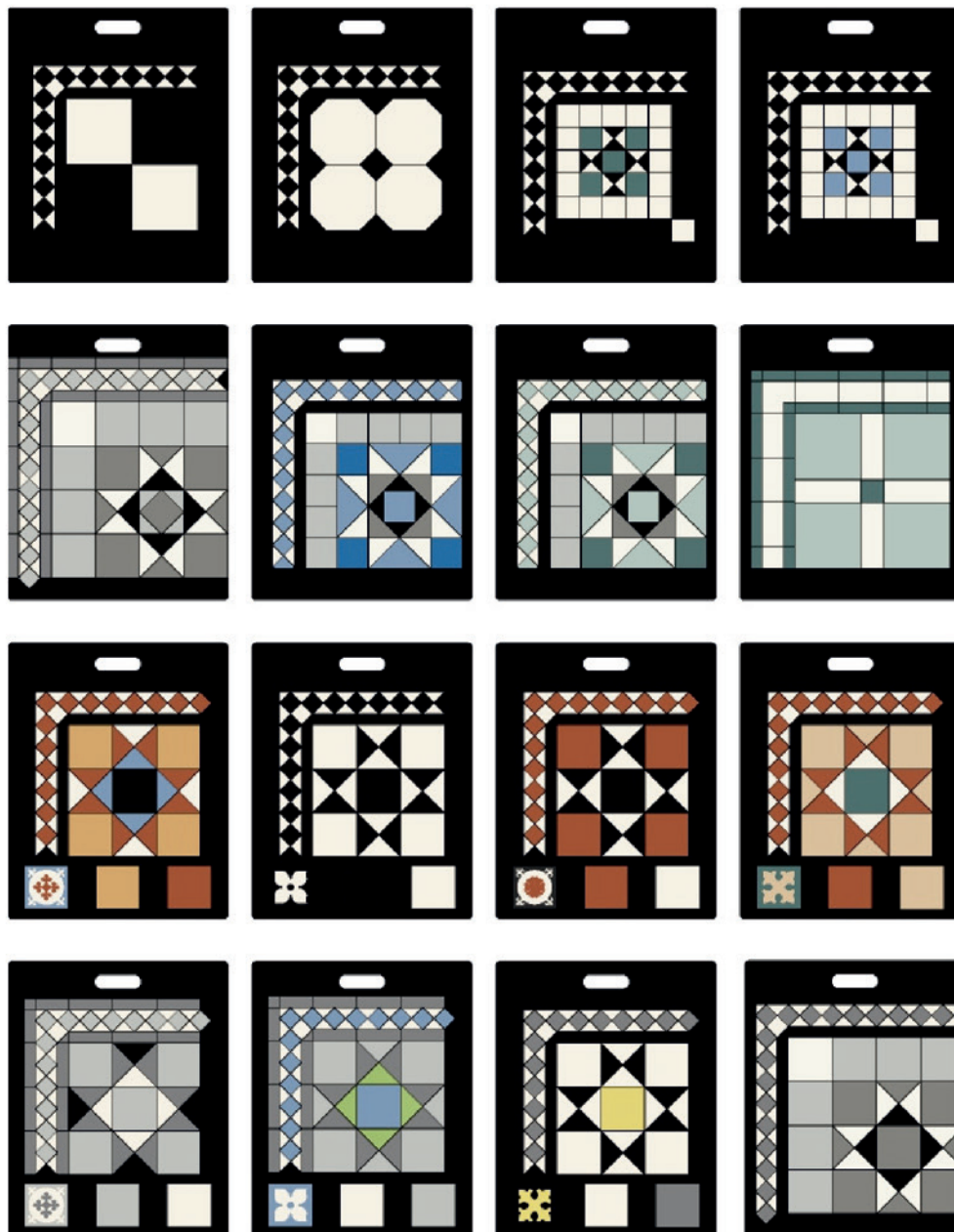
- Authentic Victorian Style Aesthetic
- Pre-determined Grout Lines (2mm)
- Reduced Fitting Time (21 individual mosaic pieces per panel)
- Reduced Fitting Costs
- Easy to Measure, Plan, Price and Fit
- No Sealing Required
(less than 0.05% water absorption)
- Highly Durable
- Scratch Resistant
- Stain Resistant
- Easy to Clean and Maintain
- UV Resistant
- Suitable for Commercial/High Foot Traffic Areas
- Suitable for Indoor and Outdoor Application
- Clean Minimal Appearance
- Minimum **R9** Slip-Start Value (DIN 51130)
- **A - Rated** Slip-Start Value (DIN 51097)
Coefficient of Friction (PTV Slider 96)

Dry0.58 Wet0.36

Features

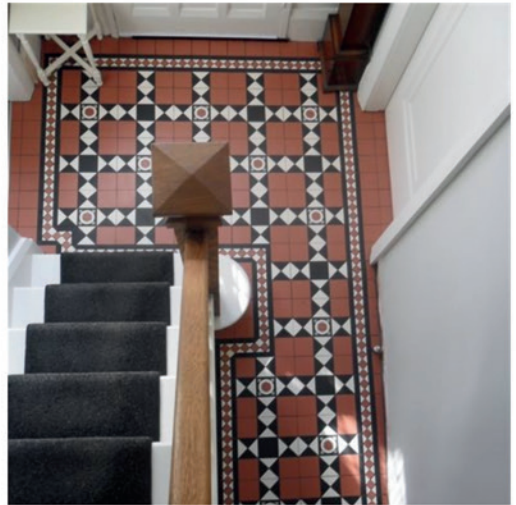
-
- Victorian Style Natural Finish
- Mesh Mounted Tile Panels
- Modular Design with Inter-Linking Components
- Full Body Porcelain Tiles
- Rectified Edges
- Slip Resistance





PRODUCT IMAGES

Each customer will receive a 2D drawing of their desired area below you can see an example of the 2D drawing and finished areas.



PRODUCT IMAGES



BESPOKE DESIGN SERVICE AVAILABLE

For customers requiring bespoke colours and geometric patterns we specialise in designing and creating truly innovative tile and mosaic surfaces for interior, commercial and residential design projects.

We integrate several operational processes, using waterjet cutting, laser etching and assembling technology to consistently achieve high quality personalised floor tile designs, marble and tile carpets and bespoke mosaics for both domestic and commercial applications to the exact specifications of every client.

By using combinations of tiles, marble, glass and metal, our creative team will work with you create unique designs specifically tailored to your individual projects.

From the initial brief, our creative in-house design team can provide you with a comprehensive design service including colour suggestions, prices, 2D and 3D drawings, samples and technical information.

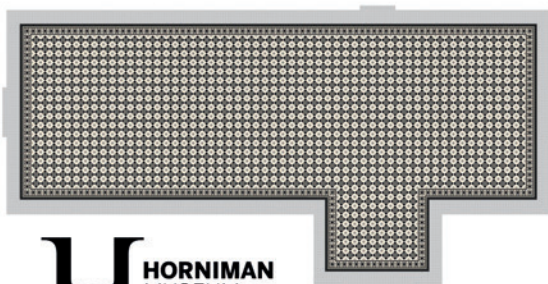
Design Personalised... **just for you!**



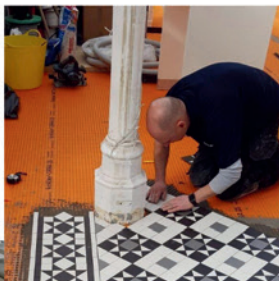
#madebyarmatile



PRODUCT IMAGES



H **HORNIMAN**
MUSEUM
& GARDENS



PRODUCT IMAGES



IF YOU HAVE AN QUESTIONS OR QUERIES, PLEASE DO NOT HESITATE TO CONTACT OUR FRIENDLY AND KNOWLEDGEABLE TEAM.



#madebyarmatile

Manufactured by -
armatile

Station Road Industrial Estate
Loughgall Road
Armagh
N.Ireland
BT61 7NP

Tel: 028 3752 7007
Email: design@armatile.com

armatile.com

